

AYA FASTENERS

FASTENERS, AS YOU ASKED

AYA Fasteners (Hebei) Co., Ltd.

Tel: +86-311-8587 0676

Fax: +86-311-8607 3288

Email: sales@ayafasteners.com

Address: No. 39 Xiangyi Road, Xinhua District,
Shijiazhuang, Hebei, China



Website



Wechat

AYA Fasteners (Hebei) Co., Ltd.

CONTENTS

P01	Company Profile
P02	AYA Brand Experience
P03-04	AYA Brand Culture Introduction
P05-06	AYA Products Description
P08	Bolts-Hexagonal Bolts
P09	Bolts-Carriage Bolts
P10	Bolts-Flange Bolts
P11	Bolts-Round Head Bolts
P11	Bolts-Square Bolts
P12-14	Bolts-Other Series
P16	Nuts-Hex Nuts
P16	Nuts-Flange Nuts
P17	Nuts-Lock Nuts
P17	Nuts-Wing Nuts
P18	Nuts-Other Series
P20	Screws-Self Tapping Screws
P21	Screws-Self Drilling Screws
P22	Screws-Drywall Screws
P22	Screws-Wood Screws
P23	Screws-Chipboard Screws
P23	Screws-Machine Screws
P24-25	Screws-Other Series
P26	Screws Styles Diagram
P28	Washers-Flat Washers
P29	Washers-Spring Washers
P29	Washers-Wave Spring Washers
P30	Washers-Lock Washers
P30	Washers-Thrust Washers
P31	Washers-Other Series
P32-37	Fasteners Usage Scenarios
P38	Advanced Production Flows
P39-43	Quality Assurance-Inspection Instruments
P44	Quality Assurance-Certification
P45	Quality Assurance-Superior Packaging

COMPANY PROFILE

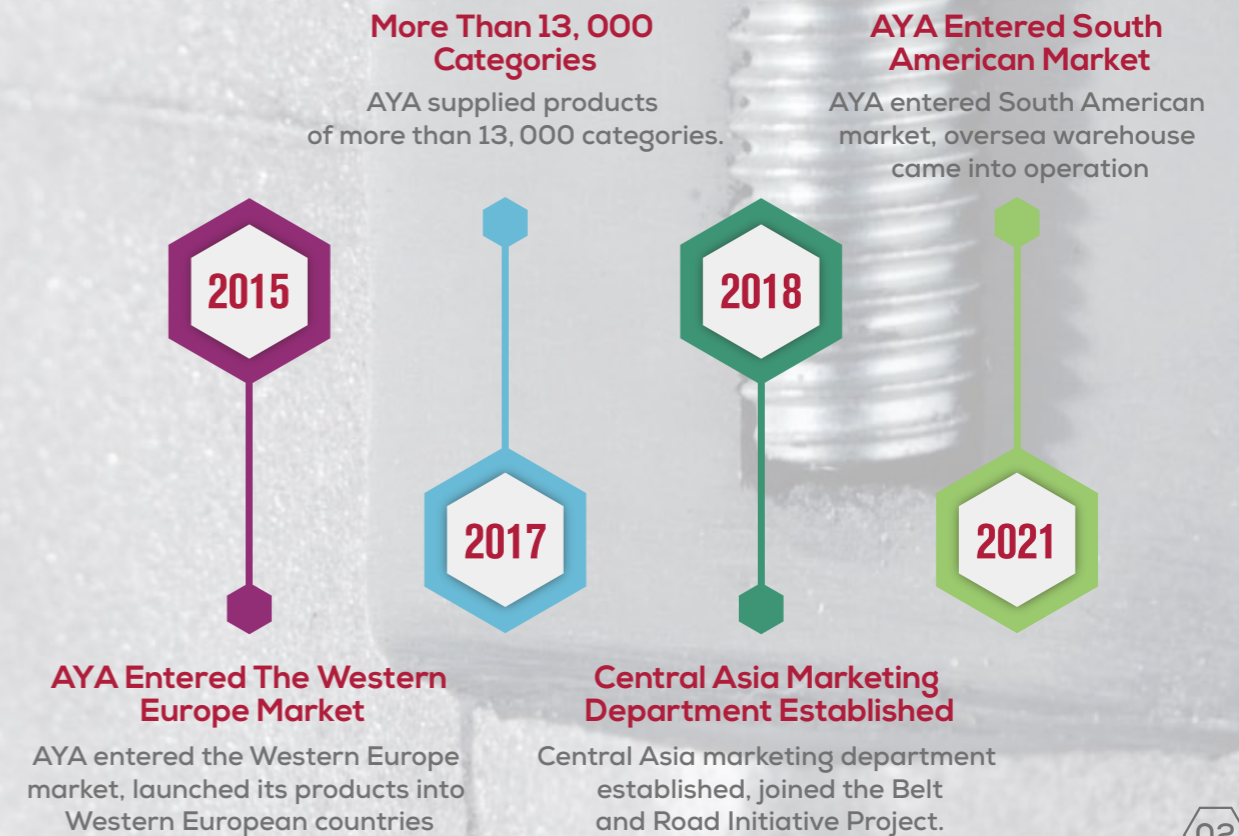
AYA Fasteners (Hebei) Co., Ltd.

As a Global Fastening Customization Solutions Supplier, AYA has been deeply involved in fastener industry with a single-minded and dedicated attitude, devoting to providing our customers with more industry-specific, professional, standardized, and precise fasteners solutions. Besides more targeted and specific fastening solutions, AYA also provide you with exclusive value-added service. Anywhere, anytime, when you have any related problems and demand with fasteners, please feel free to contact our AYA customers service. We will customize proper solutions based on your actual situation and requirement.

Founded In 2008.
ISO-9001 ISO-14001 ISO-45001 Certified.
Over 13,000 Fastener Product Categories.
Over 30 International Service Outlets.
Five Self-owned Mills.



AYA BRAND EXPERIENCE





Brand Slogan :

Fasteners,
as you asked



Brand value :

AYA's service process better satisfy customers' needs than the fastener itself

Brand Positioning :

Global fastening customization solutions supplier



Brand Mission :

Devoting to satisfying multi-scenario fastening demand of our global customers



Brand Statement :

Providing professional solutions with dedicated attitude



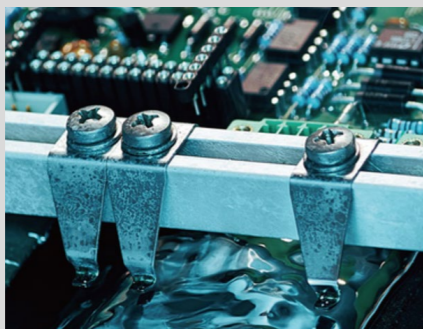
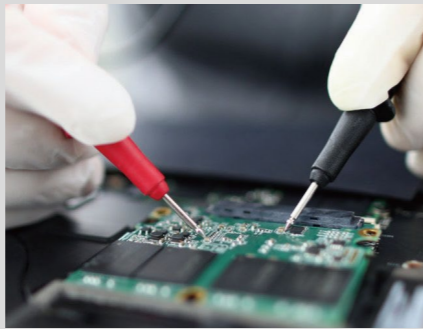
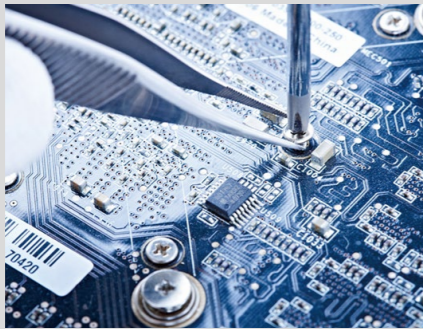
Brand Advantages :

- Production advantage:** High standard ensures high quality
- Management advantage:** Standardization ensures high efficiency
- Service advantage:** Constant provision of excellent service

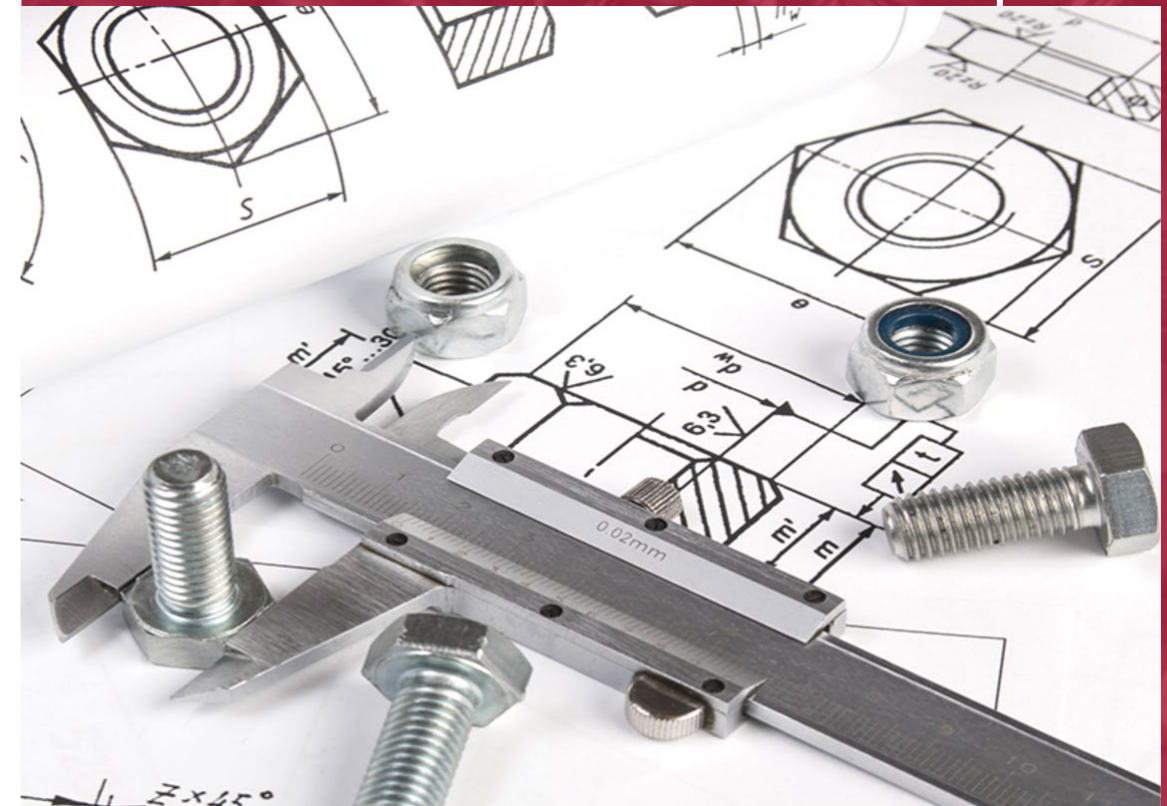


Heavy Industrial Fastening

Light Industrial Fastening



Non-standard
Customization
Fastening





HEXAGONAL BOLTS

Standard	DIN 933	
Thread	Full Thread	
Size	M1.6-M6.4	
Material	Carbon Steel	Stainless Steel
Property	4.6-12.9	A2 (50-80)/ A4 (50-80)
Finish	Plain/ Black Oxide/ Zinc Plated/ Hot Dipped Galvanized/ Oxidized/ Dacromet/ Phosphated/ Cadmium Electroplated/ Nickel Plated	
Available Standards	DIN/ ASME/ ISO/ JIS/ GB/ Non-Standard/ etc.	



BOLTS

- Hexagonal Bolts
- Carriage Bolts
- Flange Bolts
- Round Head Bolts
- Square Bolts
- Hexagonal Socket Head Bolts
- Foundation Bolts
- U Bolts
- T Bolts
- Eye Bolts
- 12-Point Bolts
- External Torx Head Bolts
- Countersunk Bolts
- Heavy Hex Structural Bolts
- Tension Control Bolts



Standard	DIN 931	
Thread	Partial Thread	
Size	M1.6-M6.4	
Material	Carbon Steel	Stainless Steel
Property	4.6-12.9	A2 (50-80)/ A4 (50-80)
Finish	Plain/ Black Oxide/ Zinc Plated/ Hot Dipped Galvanized/ Oxidized/ Dacromet/ Phosphated/ Cadmium Electroplated/ Nickel Plated	
Available Standards	DIN/ ASME/ ISO/ JIS/ GB/ Non-Standard/ etc.	

*For size and standard not indicated above, please contact us for further information

CARRIAGE BOLTS

Standard	DIN 603	
Thread	Full Thread	
Size	M5-M20	
Material	Carbon Steel	Stainless Steel
Property	4.6-12.9	A2 (50-80)/ A4 (50-80)
Finish	Plain/ Black Oxide/ Zinc Plated/ Hot Dipped Galvanized/ Oxidized/ Dacromet/ Phosphated/ Cadmium Electroplated/ Nickel Plated	
Available Standards	DIN/ ASME/ ISO/ JIS/ GB/ Non-Standard/ etc.	



FLANGE BOLTS

Standard	DIN 6921	
Thread	Full Thread	
Size	M5, M6, M8, M10, M12, M14, M16, M20	
Material	Carbon Steel	Stainless Steel
Property	8.8, 10.9, 12.9	A2 (50-80)/ A4 (50-80)
Finish	Plain/ Black Oxide/ Zinc Plated/ Hot Dipped Galvanized/ Oxidized/ Dacromet/ Phosphated/ Cadmium Electroplated/ Nickel Plated	
Available Standards	DIN/ ASME/ ISO/ JIS/ GB/ Non-Standard/ etc.	



Standard	ASME B18.5	
Thread	Partial Thread	
Size	10#, 1/4, 5/16, 3/8, 7/16, 1/2, 5/8, 3/4, 7/8, 1	
Material	Carbon Steel	Stainless Steel
Property	4.6-12.9	A2 (50-80)/ A4 (50-80)
Finish	Plain/ Black Oxide/ Zinc Plated/ Hot Dipped Galvanized/ Oxidized/ Dacromet/ Phosphated/ Cadmium Electroplated/ Nickel Plated	
Available Standards	DIN/ ASME/ ISO/ JIS/ GB/ Non-Standard/ etc.	



Standard	ISO 4162	
Thread	Full Thread	
Size	M5, M6, M8, M10, M12, M14, M16, M20	
Material	Carbon Steel	Stainless Steel
Property	8.8, 10.9, 12.9	A2 (50-80)/ A4 (50-80)
Finish	Plain/ Black Oxide/ Zinc Plated/ Hot Dipped Galvanized/ Oxidized/ Dacromet/ Phosphated/ Cadmium Electroplated/ Nickel Plated	
Available Standards	DIN/ ASME/ ISO/ JIS/ GB/ Non-Standard/ etc.	

*For size and standard not indicated above, please contact us for further information

*For size and standard not indicated above, please contact us for further information

ROUND HEAD BOLTS

Standard	ASME B 18.10	
Thread	Partial Thread	
Size	3/4, 7/8, 1, 1-1/8	
Material	Carbon Steel	Stainless Steel
Property	3/4, 7/8, 1, 1-1/8	A2 (50-80) A4 (50-80)
Finish	Plain/ Black Oxide/ Zinc Plated/ Hot Dipped Galvanized/ Oxidized/ Dacromet/ Phosphated/ Cadmium Electroplated/ Nickel Plated	
Available Standards	DIN/ ASME/ ISO/ JIS/ GB/ Non-Standard/ etc.	



SQUARE BOLTS



Standard	ASME B 18.2.1	
Thread	Partial Thread	
Size	1/4, 5/16, 3/8, 7/16, 1/2, 5/8, 3/4, 7/8, 1, 1-1/8, 1-1/4, 1-3/8, 1-1/2	
Material	Carbon Steel	Stainless Steel
Property	3/4, 7/8, 1, 1-1/8	A2 (50-80) A4 (50-80)
Finish	Plain/ Black Oxide/ Zinc Plated/ Hot Dipped Galvanized/ Oxidized/ Dacromet/ Phosphated/ Cadmium Electroplated/ Nickel Plated	
Available Standards	DIN/ ASME/ ISO/ JIS/ GB/ Non-Standard/ etc.	

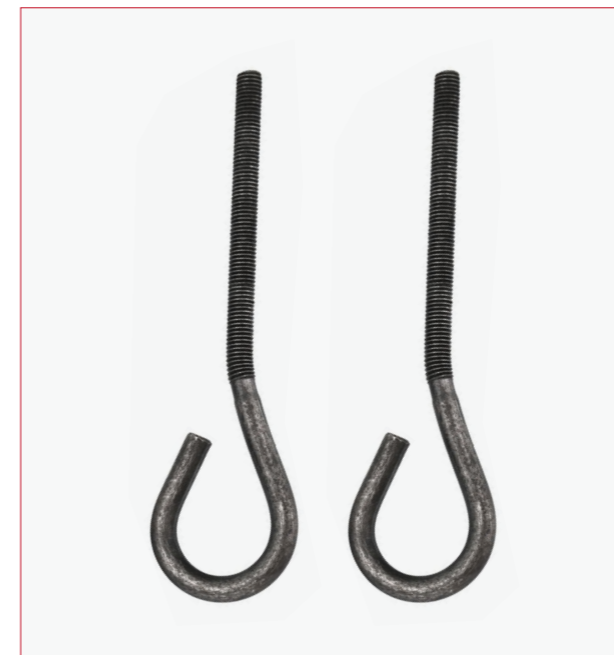
*For size and standard not indicated above, please contact us for further information



HEX SOCKET HEAD BOLTS



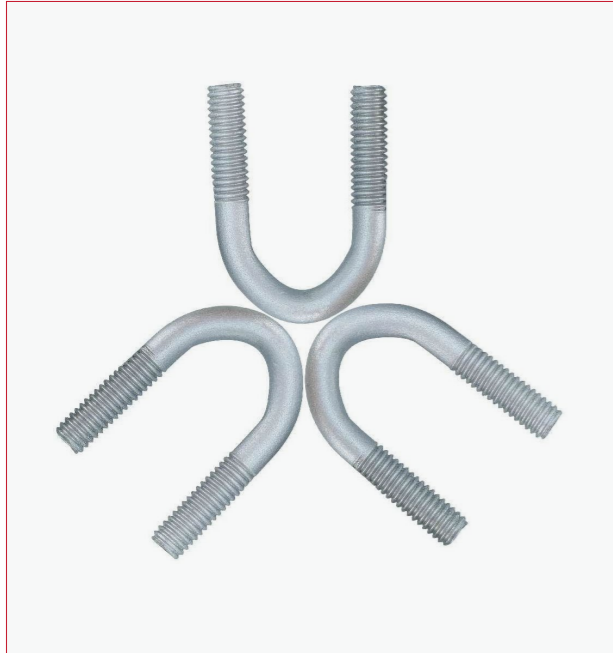
HEX SOCKET HEAD BOLTS
PARTIAL THREAD



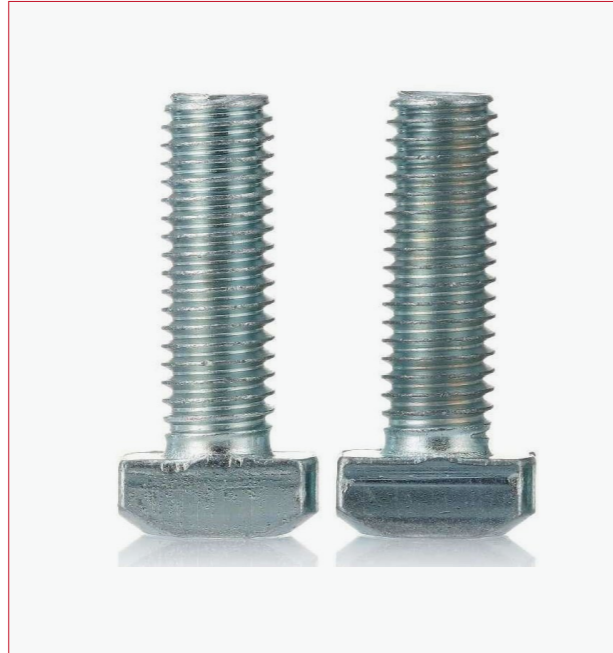
FOUNDATION BOLTS(JA)



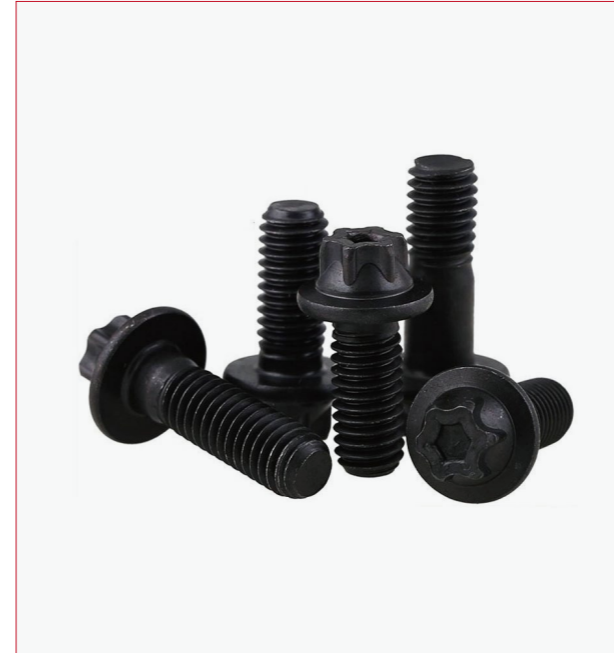
FOUNDATION BOLTS(L)



U BOLTS



T BOLTS



EXTERNAL TORX HEAD BOLTS



COUNTERSUNK BOLTS



EYE BOLTS



12-POINT BOLTS



HEAVY HEX STRUCTURAL BOLTS



TENSION CONTROL BOLTS

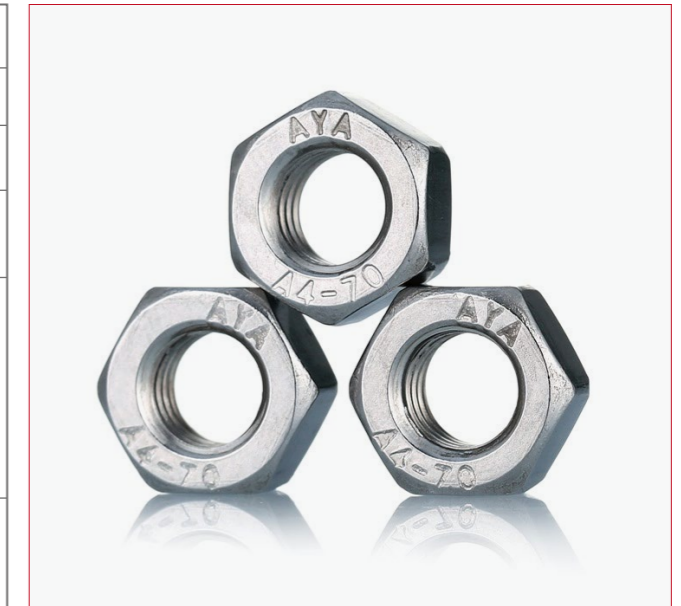


NUTS

- Hex Nuts
- Flange Nuts
- Lock Nuts
- Wing Nuts
- Cap Nuts
- Weld Nuts
- Slotted Nuts
- Square Nuts
- Wheel Nuts
- T Nuts
- Eye Nuts
- Round Nuts

HEX NUTS

Standard	DIN 934	
Size	M1.6~M6.4	
Material	Carbon Steel	Stainless Steel
Property	6, 8, 10	A2 (50-80)/ A4 (50-80)
Finish	Plain/ Black Oxide/ Zinc Plated/ Hot Dipped Galvanized/ Oxidized/ Dacromet/ Phosphated/ Cadmium Electroplated/ Nickel Plated	
Available Standards	DIN/ ASME/ ISO/ JIS/ GB/ Non-Standard/ etc.	



FLANGE NUTS

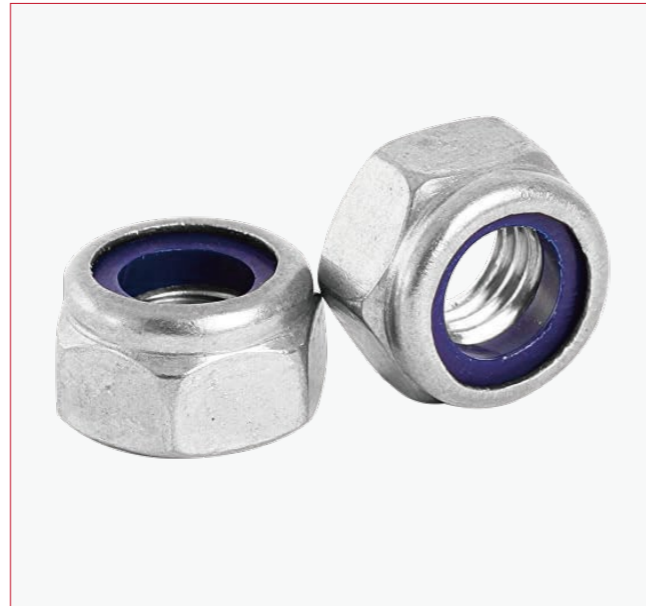


Standard	DIN 6923	
Size	M5~M20	
Material	Carbon Steel	Stainless Steel
Property	8, 10, 12	A2 (50-80)/ A4 (50-80)
Finish	Plain/ Black Oxide/ Zinc Plated/ Hot Dipped Galvanized/ Oxidized/ Dacromet/ Phosphated/ Cadmium Electroplated/ Nickel Plated	
Available Standards	DIN/ ASME/ ISO/ JIS/ GB/ Non-Standard/ etc.	

*For size and standard not indicated above, please contact us for further information

LOCK NUTS

Standard	ISO 7040	
Size	M1.6-M6.4	
Material	Carbon Steel	Stainless Steel
Property	6, 8, 10	A2 (50-80)/ A4 (50-80)
Finish	Plain/ Black Oxide/ Zinc Plated/ Hot Dipped Galvanized/ Oxidized/ Dacromet/ Phosphated/ Cadmium Electroplated/ Nickel Plated	
Available Standards	DIN/ ASME/ ISO/ JIS/ GB/ Non-Standard/ etc.	



WING NUTS



Standard	DIN 314	
Size	M1.6-M6.4	
Material	Carbon Steel	Stainless Steel
Property	6, 8, 10	A2 (50-80)/ A4 (50-80)
Finish	Plain/ Black Oxide/ Zinc Plated/ Hot Dipped Galvanized/ Oxidized/ Dacromet/ Phosphated/ Cadmium Electroplated/ Nickel Plated	
Available Standards	DIN/ ASME/ ISO/ JIS/ GB/ Non-Standard/ etc.	

*For size and standard not indicated above, please contact us for further information



CAP NUTS



WELD NUTS



SLOTTED NUTS



SQUARE NUTS



WHEEL NUTS



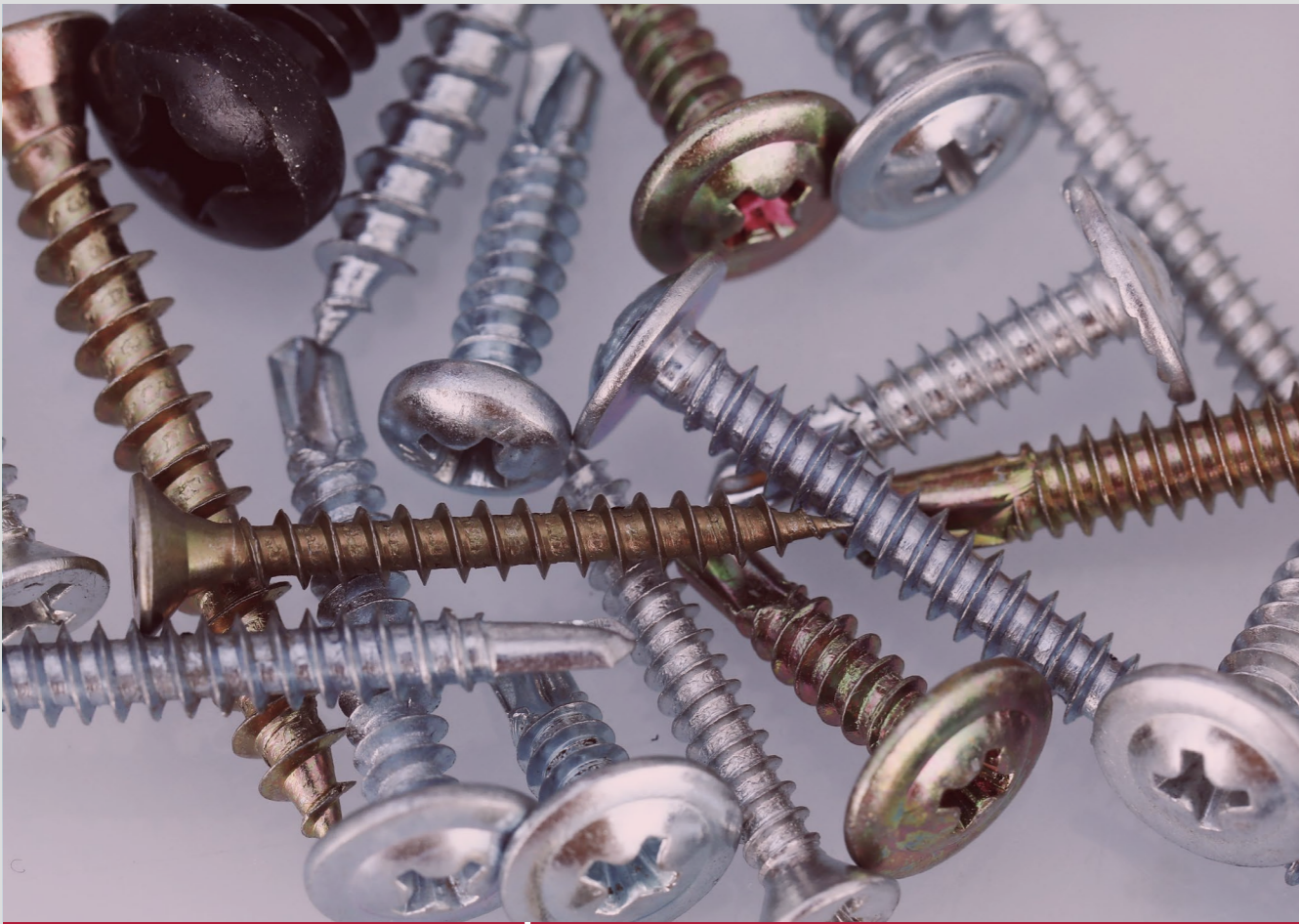
T NUTS



EYE NUTS



ROUND NUTS



SELF TAPPING SCREWS

Standard	DIN 7982	
Head Type	Flat Head / Countersunk Head	
Drive Type	Pozi Drive	
Size	ST2.2, ST2.9, ST3.5, (ST3.9) ST4.2, ST4.8, ST5.5, ST6.3 <i>*Sizes in parentheses are not preferred</i>	
Material	Carbon Steel	Stainless Steel
Finish	Plain/ Black Oxide/ Zinc Plated/ Hot Dipped Galvanized/ Oxidized/ Dacromet/ Phosphated/ Cadmium Electroplated/ Nickel Plated	
Available Standards	DIN, ISO, GB, ASME, JIS, Non-Standard, etc.	



SCREWS

Self Tapping Screws
 Self Drilling Screws
 Drywall Screws
 Wood Screws
 Chipboard Screws
 Machine Screws
 Set Screws
 Eye Screws
 Thumb Screws
 Wing Screws
 Thread Forming Screws
 Thread Cutting Screws
 Weld Screws
 Knurled Screws



Standard	DIN 7049	
Head Type	Pan Head	
Drive Type	Phillips Drive	
Material	Carbon Steel	Stainless Steel
Property	/	A2-20H, A4-20H, A5-20H
Size	ST2.2, ST2.9, ST3.5, ST4.2, ST4.8, ST5.5, ST6.3, ST8, ST9.5	
Finish	Plain/ Black Oxide/ Zinc Plated/ Hot Dipped Galvanized/ Oxidized/ Dacromet/ Phosphated/ Cadmium Electroplated/ Nickel Plated	
Available Standards	DIN, ASME, ISO, JIS, GB, Non-Standard, etc.	

**For size and standard not indicated above, please contact us for further information*

SELF DRILLING SCREWS

Standard	DIN 7504 (N)	
Head Type	Pan Head	
Drive Type	Phillips Drive	
Size	ST3.5, (ST3.9), ST4.2, ST4.8, ST5.5, ST6.3 <i>*Sizes in parentheses are not preferred</i>	
Material	Carbon Steel	Stainless Steel
Finish	Plain/ Black Oxide/ Zinc Plated/ Hot Dipped Galvanized/ Oxidized/ Dacromet/ Phosphated/ Cadmium Electroplated/ Nickel Plated	
Available Standards	DIN, ISO, GB, ASME, JIS, Non-Standard, etc.	



Standard	DIN 7504 (P)	
Head Type	Flat Head / Countersunk Head	
Drive Type	Phillips Drive	
Material	Carbon Steel	Stainless Steel
Size	ST2.9, ST3.5, (ST3.9), ST4.2, ST4.8, ST5.5, ST6.3	
Finish	Plain/ Black Oxide/ Zinc Plated/ Hot Dipped Galvanized/ Oxidized/ Dacromet/ Phosphated/ Cadmium Electroplated/ Nickel Plated	
Available Standards	DIN, ASME, ISO, JIS, GB, Non-Standard, etc.	

*For size and standard not indicated above, please contact us for further information

DRYWALL SCREWS

Standard	DIN 18182-2 (TN)
Thread	Double Thread
Head Type	Bugle Head
Drive Type	Phillips Drive
Size	3.5, 4, 4.3, 5.1, 5.5
Material	Carbon Steel
Finish	Plain/ Black Oxide/ Zinc Plated/ Hot Dipped Galvanized/ Oxidized/ Dacromet/ Phosphated/ Cadmium Electroplated/ Nickel Plated
Available Standards	DIN, ISO, GB, ASME, JIS, Non-Standard, etc.



WOOD SCREWS



Standard	DIN 571	
Head Type	Hex Head	
Material	Carbon Steel	Stainless Steel
Property	/	A2~A5 (20H, 25H)
Size	M4, M5, M6, (M7), M8, M10, M12, M16, M20 <i>*Sizes in parentheses are not preferred</i>	
Finish	Plain/ Black Oxide/ Zinc Plated/ Hot Dipped Galvanized/ Oxidized/ Dacromet/ Phosphated/ Cadmium Electroplated/ Nickel Plated	
Available Standards	DIN, ASME, ISO, JIS, GB, Non-Standard, etc.	

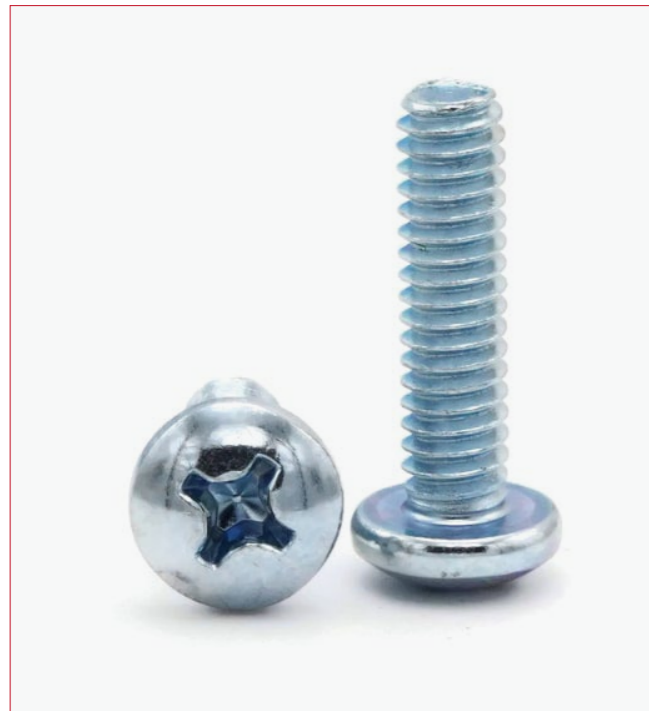
*For size and standard not indicated above, please contact us for further information

CHIPBOARD SCREWS

Standard	DIN 7505 (A)	
Head Type	Flat Head / Countersunk Head	
Drive Type	Pozi Drive	
Size	2.5, 3, 3.5, 4, 4.5, 5, 6	
Material	Carbon Steel	Stainless Steel
Finish	Plain/ Black Oxide/ Zinc Plated/ Hot Dipped Galvanized/ Oxidized/ Dacromet/ Phosphated/ Cadmium Electroplated/ Nickel Plated	
Available Standards	DIN, ASME, ISO, JIS, GB, Non-Standard, etc.	

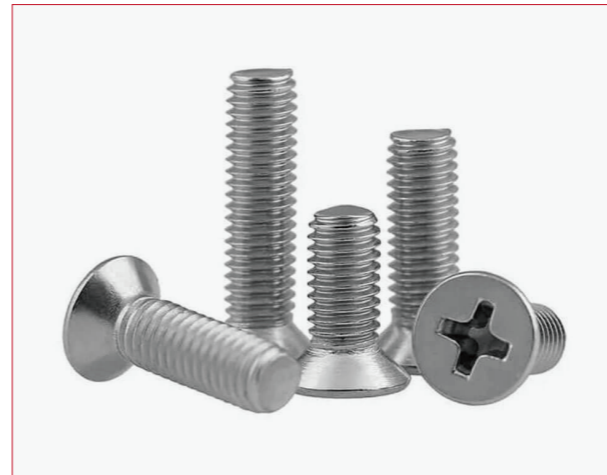


MACHINE SCREWS

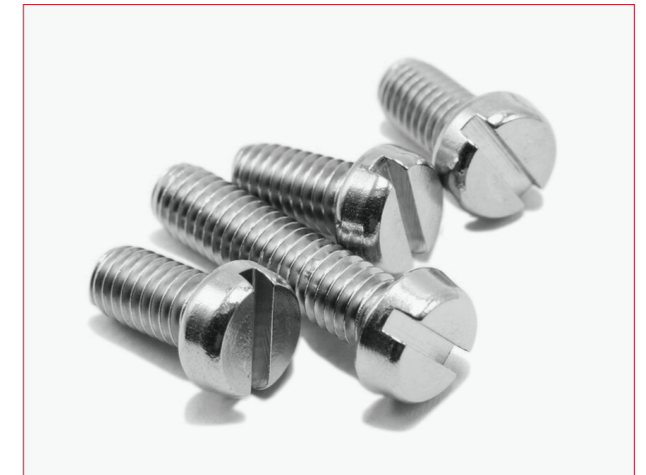


Standard	DIN 7985	
Head Type	Pan head	
Drive Type	Phillip Drive	
Size	M1.6, M2, M2.5, M3, (M3.5), M4, M5, M6, M8, M10	
Material	Carbon Steel	Stainless Steel
Property	4.8, 5.8, 8.8	A2-70, A4-70
Finish	Plain/ Black Oxide/ Zinc Plated/ Hot Dipped Galvanized/ Oxidized/ Dacromet/ Phosphated/ Cadmium Electroplated/ Nickel Plated	
Available Standards	DIN, ASME, ISO, JIS, GB, Non-Standard, etc.	

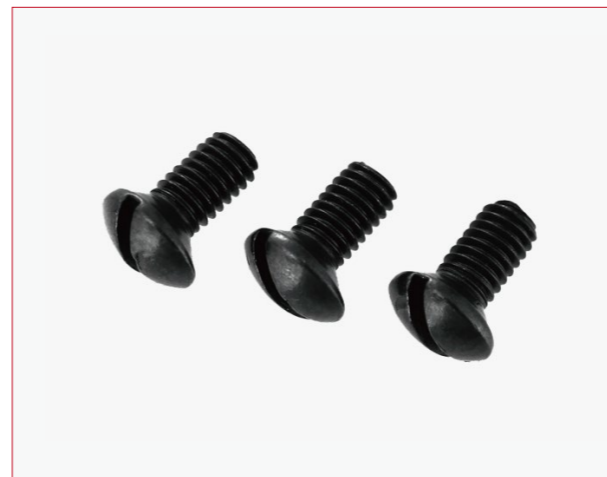
*For size and standard not indicated above, please contact us for further information



FLAT HEAD MACHINE SCREWS



CHEESE HEAD MACHINE SCREWS



WASHER HEAD DRILLING SCREWS



SET SCREWS



EYE SCREWS



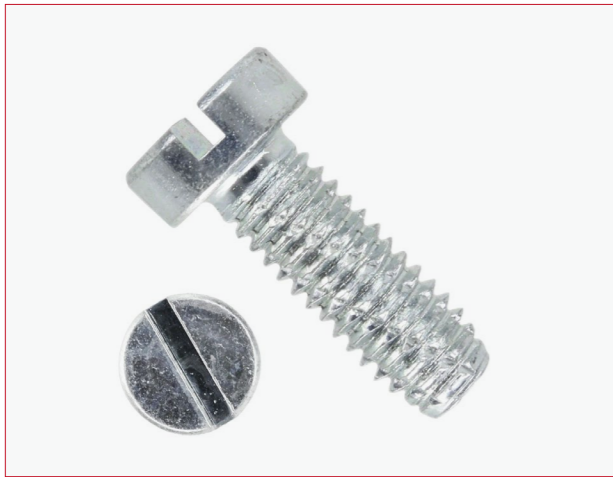
THUMB SCREWS



WING SCREWS



THREAD FORMING SCREWS



THREAD CUTTING SCREWS



WELD SCREWS



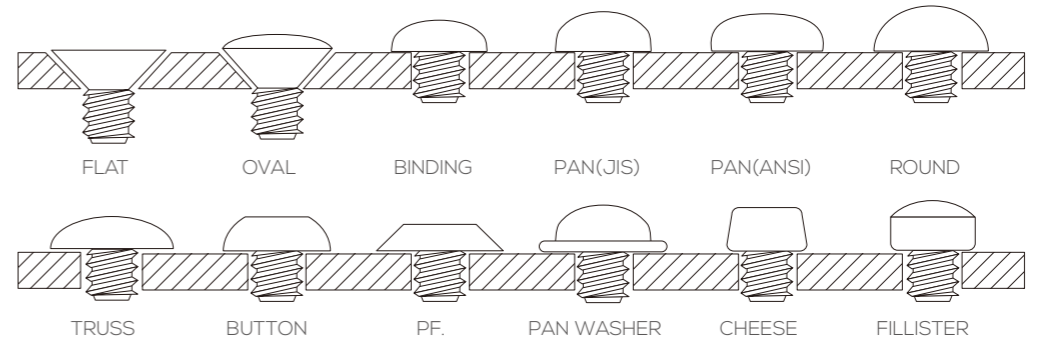
KNURLED SCREWS



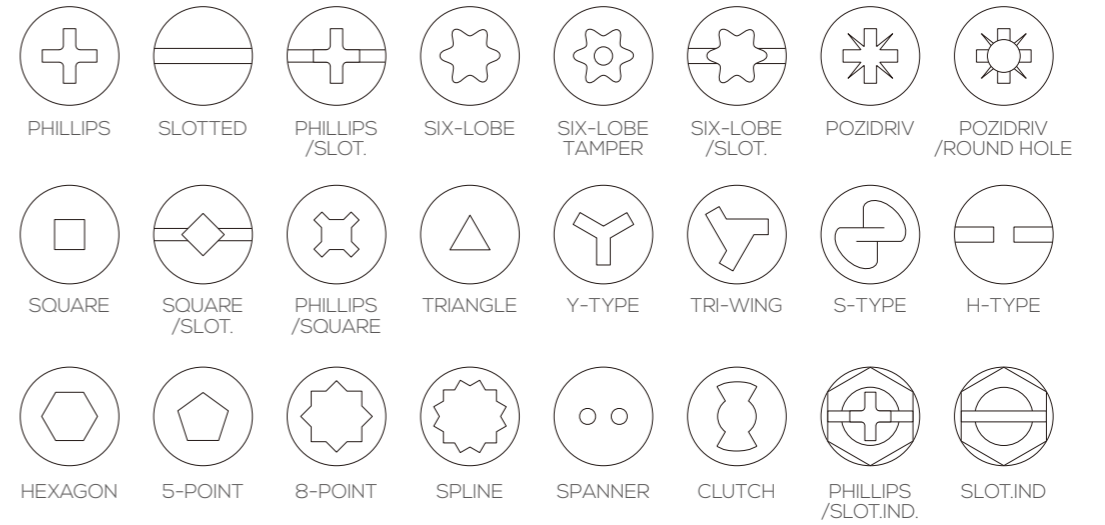
TRUSS HEAD DRYWALL SCREWS

SCREWS STYLES DIAGRAM

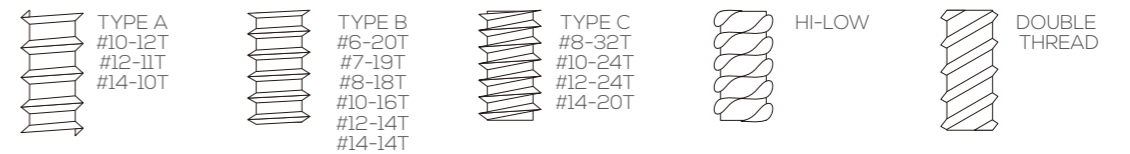
Screws Head Styles



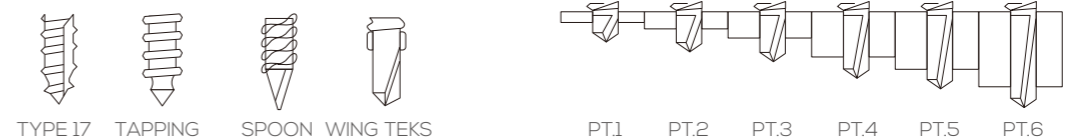
Screw Drivers



Threads



Points



FLAT WASHERS

Standard	DIN 125A	
Size	3, 4, 5, 6, 7, 8, 10, 12, 13, 14, 16, 18, 20, 45, 50, 55, 60, 65, 70, 75, 80, 85, 90, 95, 100	
Material	Carbon Steel	Stainless Steel
Finish	Plain/ Black Oxide/ Zinc Plated/ Hot Dipped Galvanized/ Oxidized/ Dacromet/ Phosphated/ Cadmium Electroplated/ Nickel Plated	
Available Standards	DIN, ISO, GB, ASME, JIS, Non-Standard, etc.	



WASHERS

- Flat Washers
- Spring Washers
- Wave Spring Washers
- Lock Washers
- Thrust Washers
- Wedge Lock Washers
- Square Washers
- Tab Washers
- Sealing Washers
- Ring Gaskets
- Disk Spring Washers

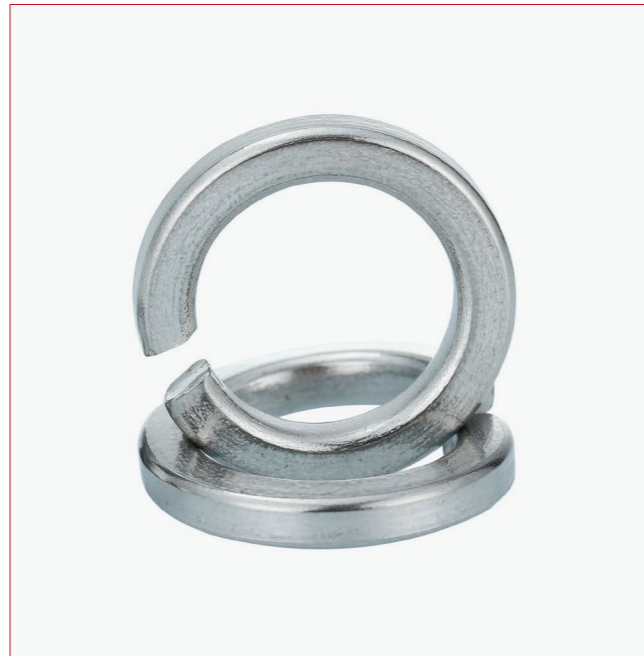


Standard	ISO 7089	
Size	$\Phi 1.6, \Phi 2, \Phi 2.5, \Phi 3, (\Phi 3.5), \Phi 4, \Phi 5, \Phi 6, \Phi 8, \Phi 10, \Phi 12, (\Phi 14), \Phi 16, (\Phi 18), \Phi 20, (\Phi 22), \Phi 24, (\Phi 27), \Phi 30, (\Phi 33), \Phi 36, (\Phi 39), \Phi 42, (\Phi 45), \Phi 48, (\Phi 52), \Phi 56, (\Phi 60), \Phi 64$ <small>*Sizes in parentheses are not preferred</small>	
Material	Carbon Steel	Stainless Steel
Property	200 HV (200 HV~300 HV), 300 HV (300 HV~370 HV)	200 HV (200 HV~300 HV)
Finish	Plain/ Black Oxide/ Zinc Plated/ Hot Dipped Galvanized/ Oxidized/ Dacromet/ Phosphated/ Cadmium Electroplated/ Nickel Plated	
Available Standards	DIN, ISO, GB, ASME, JIS, Non-Standard, etc.	

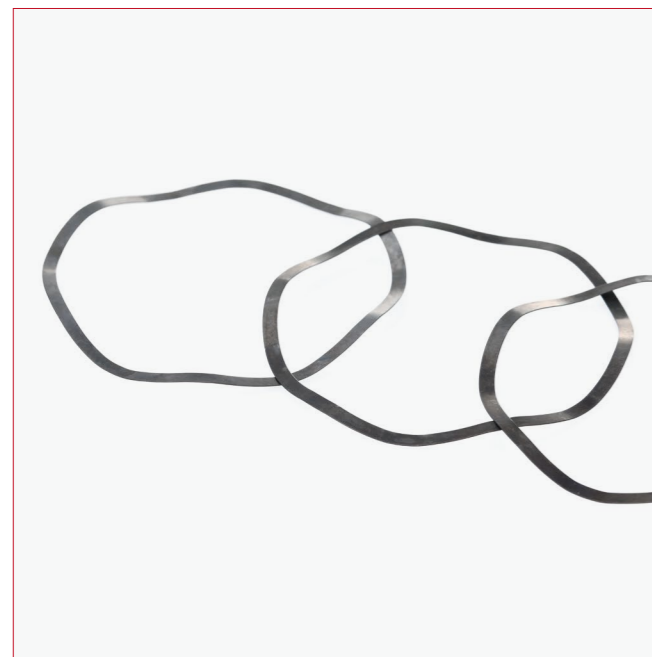
*For size and standard not indicated above, please contact us for further information

SPRING WASHERS

Standard	DIN 127 (B)	
Size	Ø2, Ø2.2, Ø2.5, Ø3, Ø3.5, Ø4, Ø5, Ø6, Ø7, Ø8, Ø10, Ø12, Ø14, Ø16, Ø18, Ø20, Ø22, Ø24, Ø27, Ø30, Ø36, Ø39, Ø42, Ø45, Ø48, Ø52, Ø56, Ø60, Ø64, Ø68, Ø72, Ø80, Ø90, Ø100	
Material	Carbon Steel	Stainless Steel
Property	HV 430-530	/
Finish	Plain/ Black Oxide/ Zinc Plated/ Hot Dipped Galvanized/ Oxidized/ Dacromet/ Phosphated/ Cadmium Electroplated/ Nickel Plated	
Available Standards	DIN, ASME, ISO, JIS, GB, Non-Standard, etc.	



WAVE SPRING WASHERS



Standard	DIN 137 (B)	
Size	M3, M3.5, M4, M5, M6, M7, M8, M10, M12, M14, M16, M18, M20, M22, M24, M27, M30, M33, M36	
Material	Carbon Steel	Stainless Steel
Property	HV 430-530	/
Finish	Plain/ Black Oxide/ Zinc Plated/ Hot Dipped Galvanized/ Oxidized/ Dacromet/ Phosphated/ Cadmium Electroplated/ Nickel Plated	
Available Standards	DIN, ASME, ISO, JIS, GB, Non-Standard, etc.	

*For size and standard not indicated above, please contact us for further information

LOCK WASHERS

Standard	DIN 6798 (J)	
Metric Thread Size	M3-M130	
Inch Thread Size	#5~5"	
Material	Carbon Steel	Stainless Steel
Finish	Plain/ Black Oxide/ Zinc Plated/ Hot Dipped Galvanized/ Oxidized/ Dacromet/ Phosphated/ Cadmium Electroplated/ Nickel Plated	
Available Standards	DIN, ASME, ISO, JIS, GB, Non-Standard, etc.	



THRUST WASHERS



Standard	ISO 6525	
Size	6, 7, 8, 9, 10, 11, 12, 13, 14, 15, 16, 17, 18, 19, 20, 21, 22, (23), 24, 25, 26, (27), 28, 30, 32, 34, 36, 38, (39), 40, 42, (44), 45, 48, 50, 53, (55), 56, (57), 60, 63, (65), 67, (70), 71, 75, 80 *Sizes in parentheses are not preferred	
Material	Carbon Steel	Stainless Steel
Finish	Plain/ Black Oxide/ Zinc Plated/ Hot Dipped Galvanized/ Oxidized/ Dacromet/ Phosphated/ Cadmium Electroplated/ Nickel Plated	
Available Standards	DIN, ASME, ISO, JIS, GB, Non-Standard, etc.	

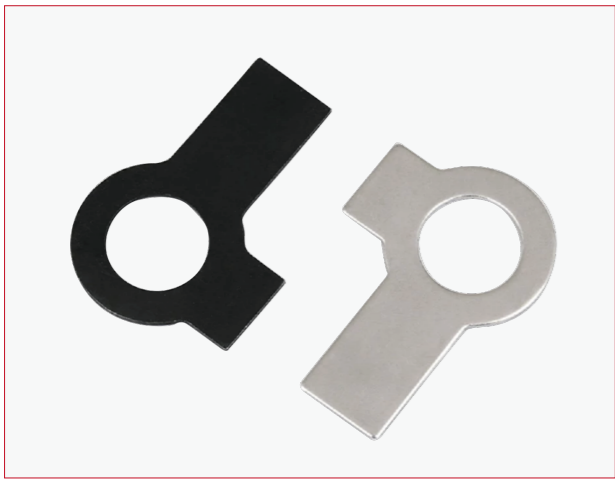
*For size and standard not indicated above, please contact us for further information



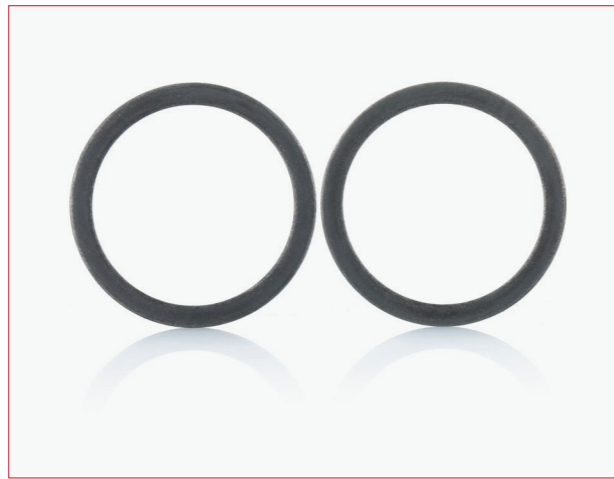
WEDGE LOCK WASHERS



SQUARE WASHERS



TAB WASHERS



SEALING WASHERS



RING GASKETS



DISK SPRING WASHERS

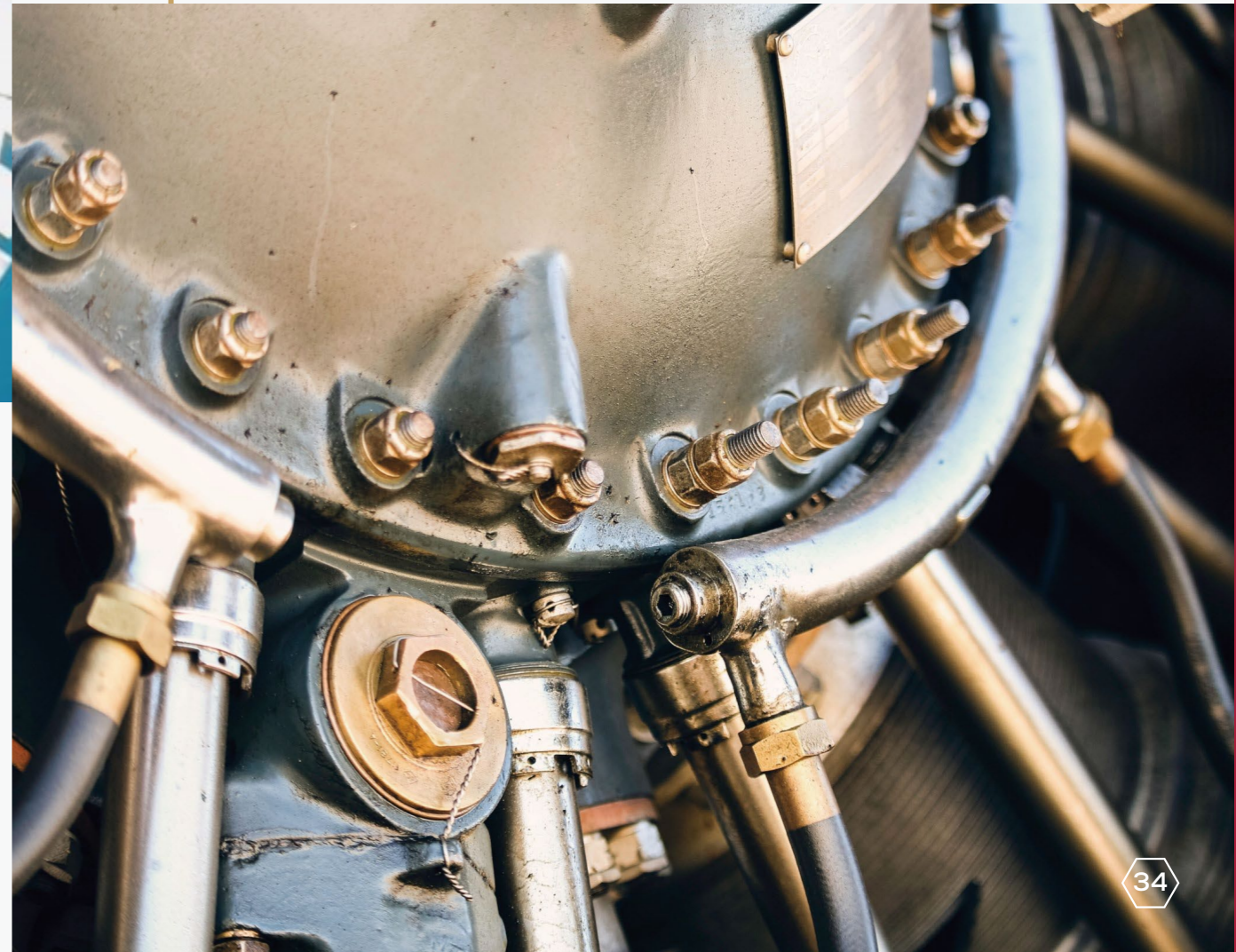
HOUSEHOLD SUPPLIES

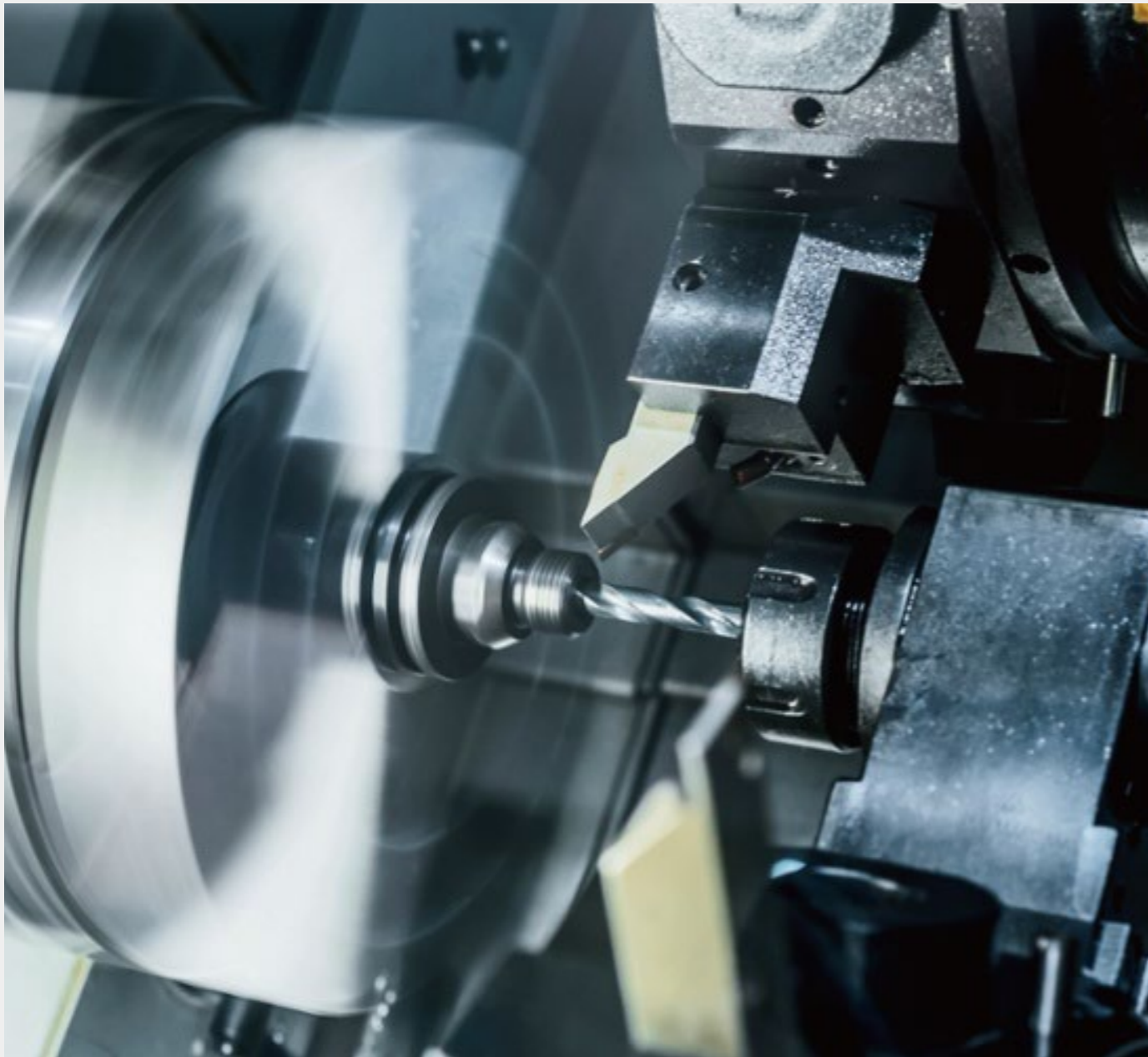




**CONSTRUCTIONAL
ENGINEERING**

**ENERGY
INDUSTRY**





**PRECISION
INSTRUMENT**

**AUTOMOTIVE
MANUFACTURING**

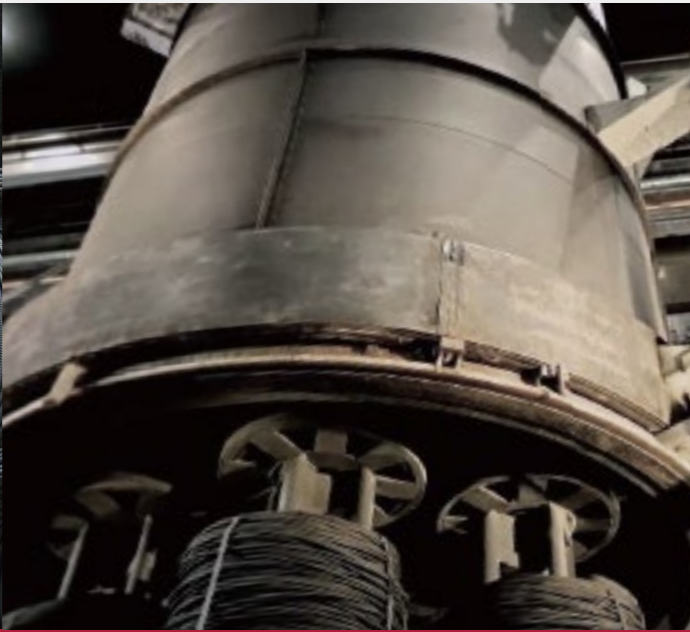




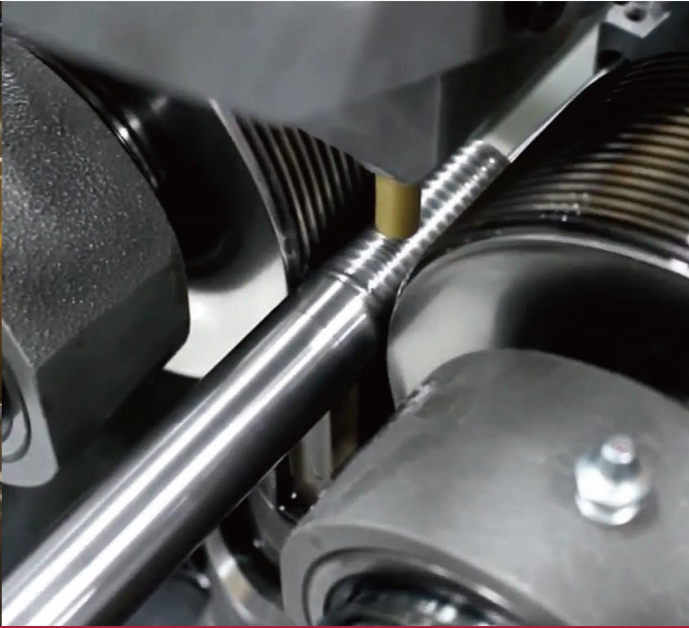
ELECTRONIC AND ELECTRICAL INDUSTRY

ADVANCED PRODUCTION FLOWS

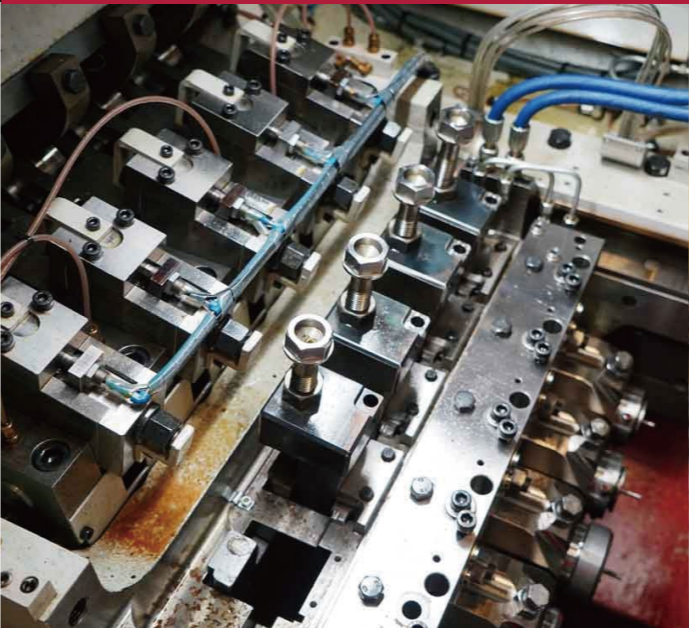


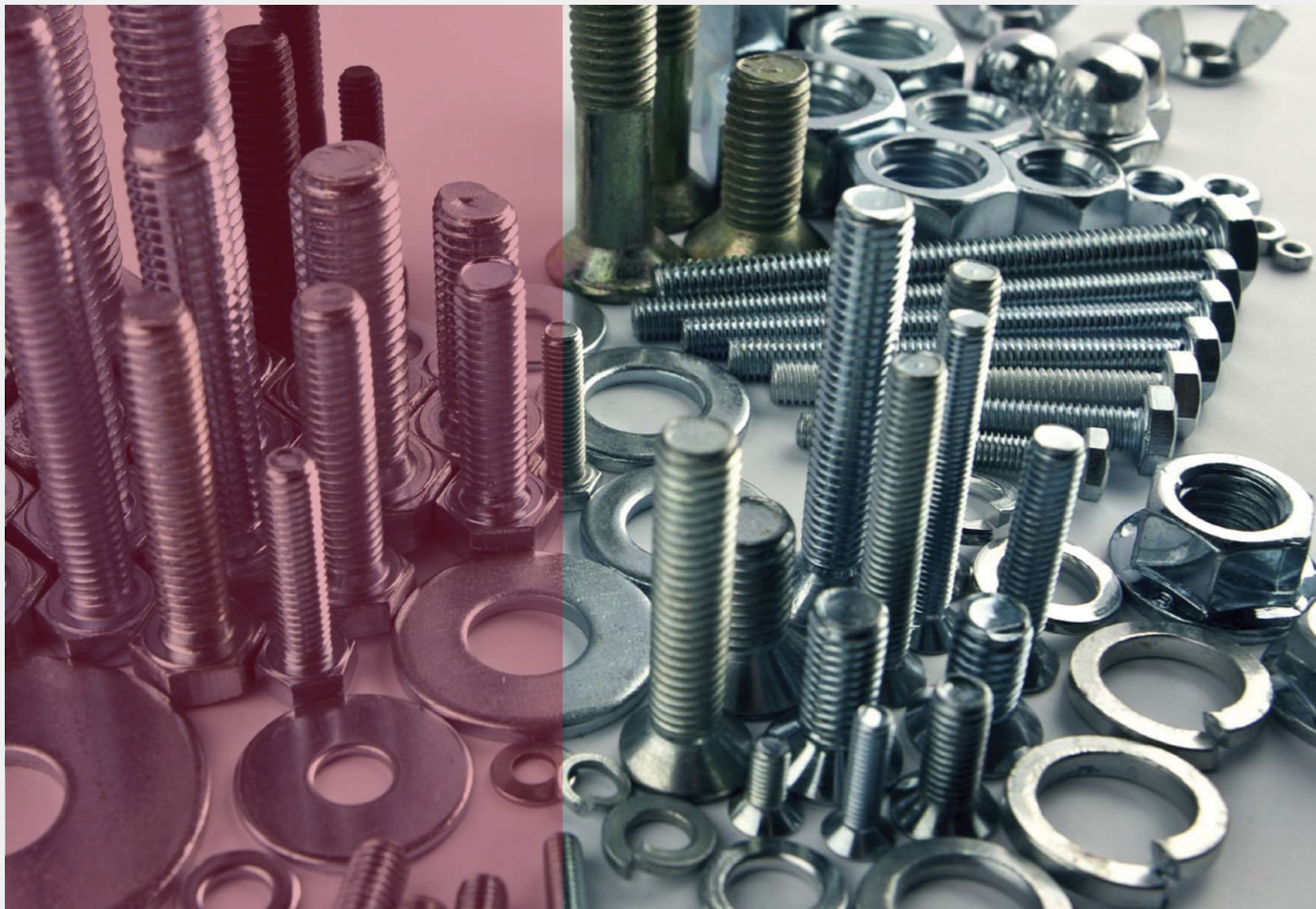


- 5. Cold Forming
- 6. Thread Rolling
- 7. Trail Forming
- 8. Heat Treatment



- 1. Raw Material
- 2. Wire Rod Annealing
- 3. Acid Cleaning
- 4. Wire Rod Drawing





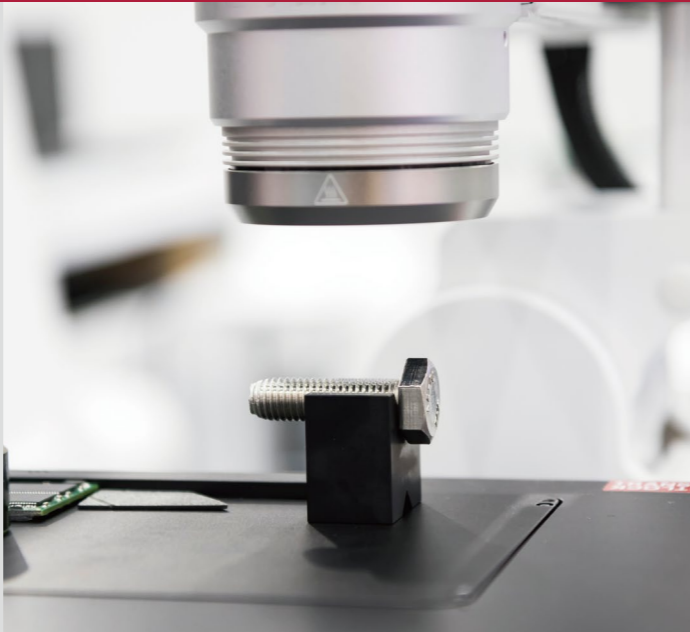
1. Rockwell Hardness Tester
2. Vickers Hardness Tester



QUALITY ASSURANCE

AYA has a professional QC team with over 30 experienced technicians and 10 senior fasteners experts. Meanwhile, an advanced fasteners laboratory with multiple testing instruments has also been established to ensure the high quality of the raw materials and final products.





1. VMS Image Measurement Instrument
2. Salt-mist Corrosion Tester
3. Metallographic Sample Cutting Machine
4. Fasteners Microscope



QUALITY ASSURANCE





SUPERIOR PACKAGING

Unique packing supported with SEM service to promote your sales. Superior packaging materials with excellent physical properties to keep your goods intact during the shipment.

AYA's design team can meet customers' unique needs for labels.